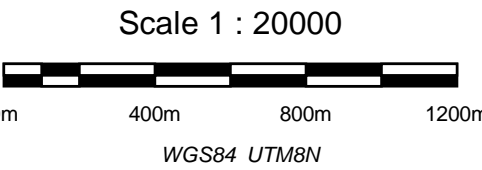


Line T14500

- Legend**
- Single Peak Conductor
  - Double Peak Conductor
  - Wide Zone Strong
  - Wide Zone Medium
  - Wide Zone Weak

NOTE:  
AdTau outcomes used in this MultiPlot were calculated from the Z dB/dt data using 0.002 pV/Am^4 as the cutoff.

EM Z Component Channel Times (µs)	
1	120
2	141
3	167
4	198
5	234
6	281
7	339
8	406
9	484
10	573
11	682
12	818
13	974
14	1151
15	1370
16	1641
17	1953
18	2307
19	2745
20	3286
21	3911
22	4620
23	5495
24	6578
25	7828



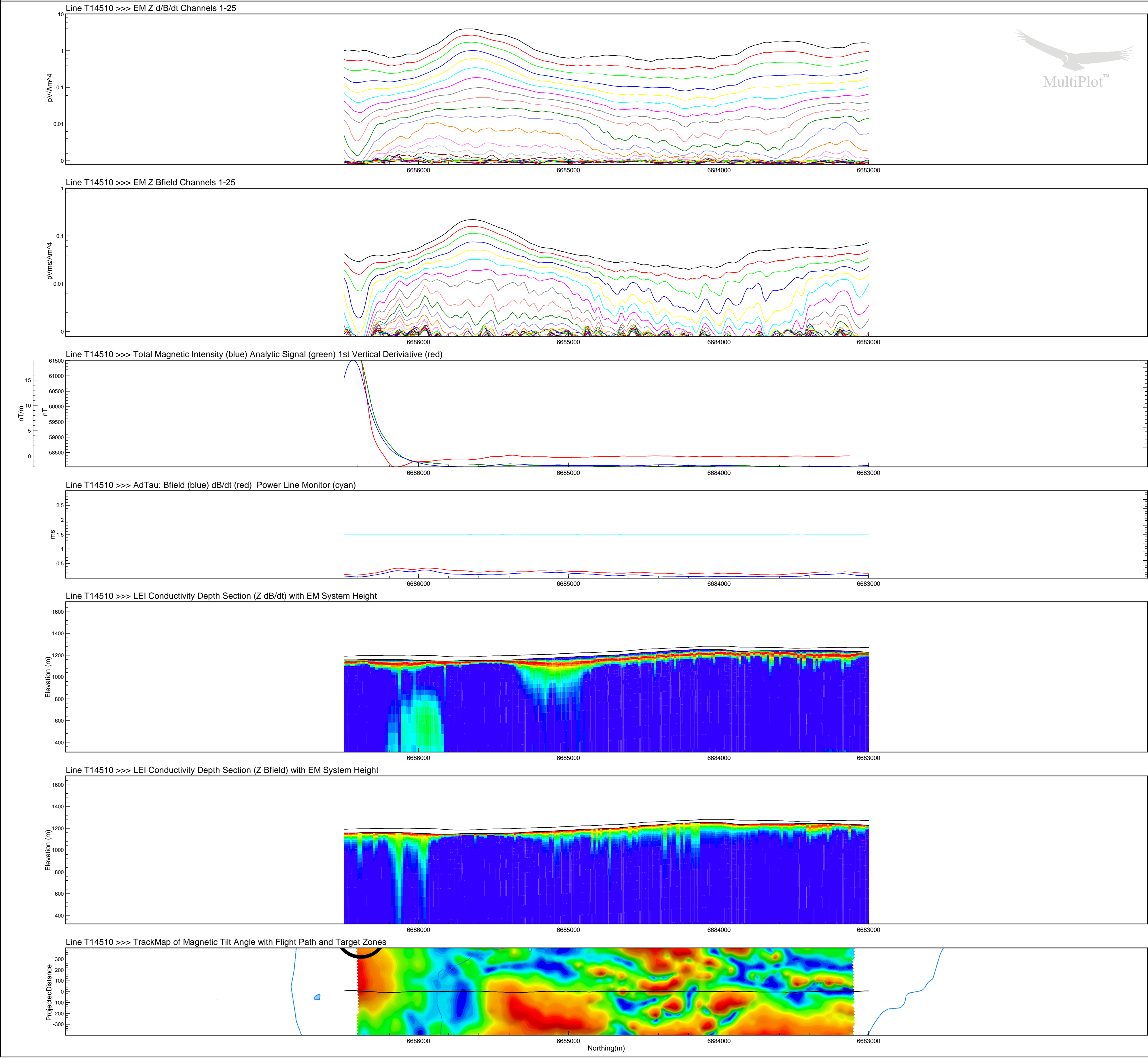
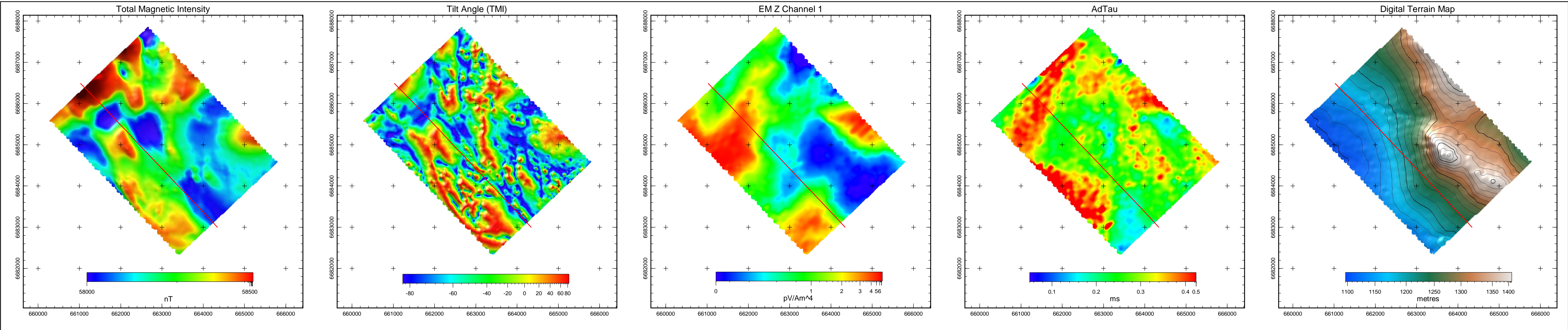
Tarsis Capital Corp  
Caribou Project  
Yukon  
VTEM 30 Hz Survey

Flown: July 2008  
Processed: January 2009



Condor Consulting Inc.  
Lakewood, Colorado





## Line T14510

### Legend

- Single Peak Conductor
- Double Peak Conductor
- Wide Zone Strong
- Wide Zone Medium
- Wide Zone Weak

NOTE:  
AdTau outcomes used in this MultiPlot were calculated  
from the Z dB/dt data using 0.002 pV/Am^4 as the cutoff.

EM Z Component Channel Times (µs)	
1	120
2	141
3	167
4	198
5	234
6	281
7	339
8	406
9	484
10	573
11	682
12	818
13	974
14	1151
15	1370
16	1641
17	1953
18	2307
19	2745
20	3286
21	3911
22	4620
23	5495
24	6578
25	7828

Scale 1 : 20000  
0m 400m 800m 1200m  
WGS84 UTM8N

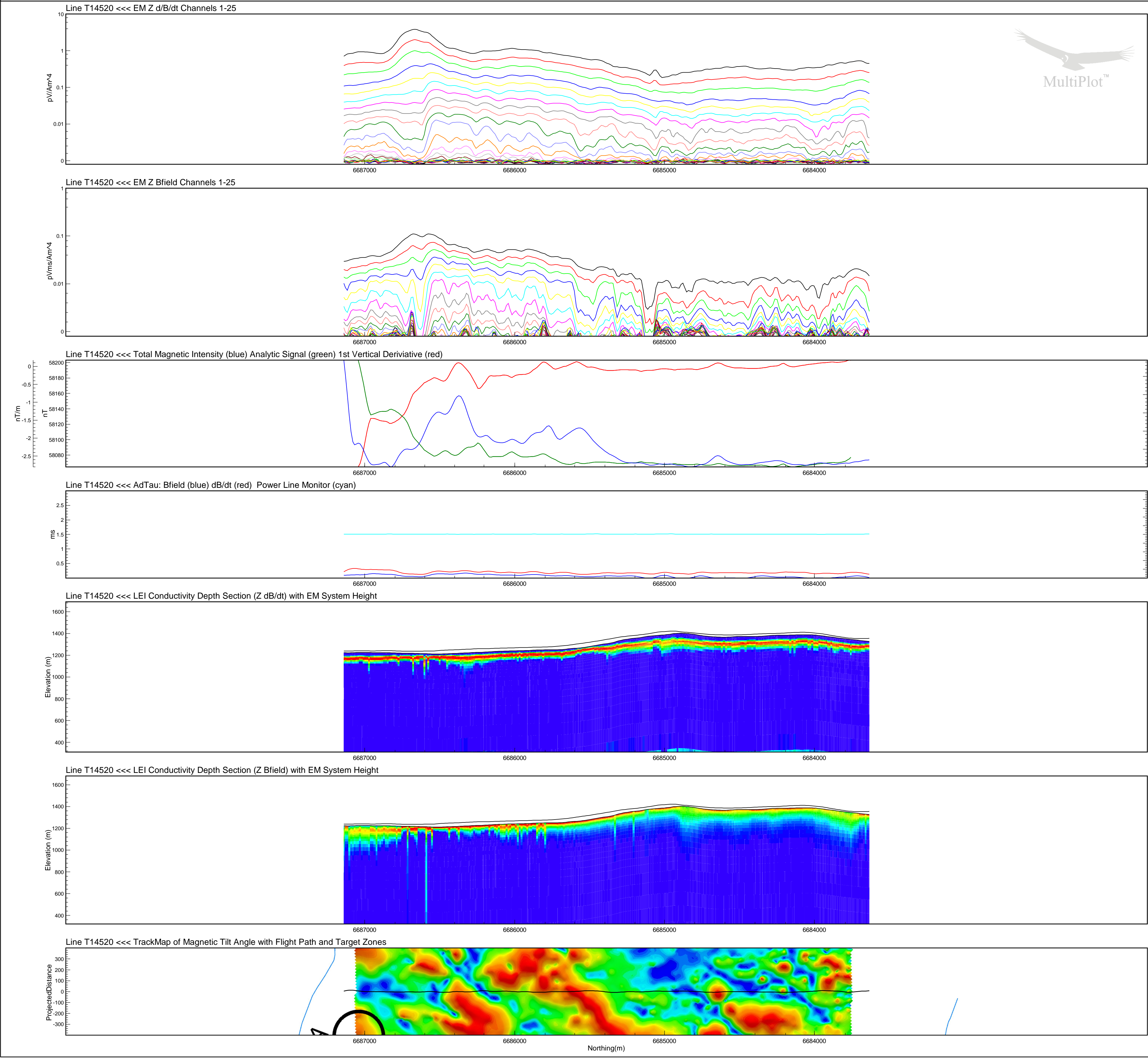
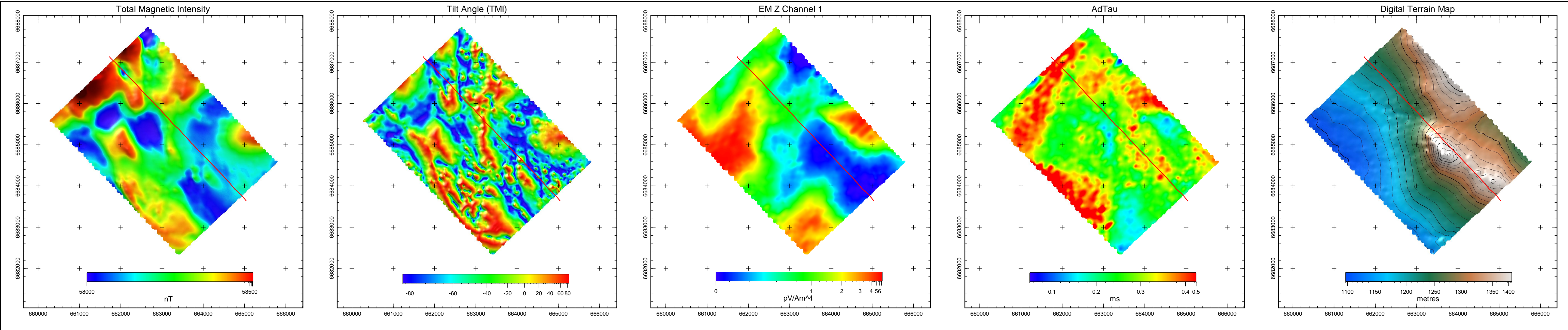
Tarsis Capital Corp  
Caribou Project  
Yukon  
VTEM 30 Hz Survey

Flown: July 2008  
Processed: January 2009



Condor Consulting Inc.  
Lakewood, Colorado





Line T14520

Legend

Single Peak Conductor

Double Peak Conductor

Wide Zone Strong

Wide Zone Medium

Wide Zone Weak

NOTE:

AdTau outcomes used in this MultiPlot were calculated from the Z dB/dt data using 0.002 pV/Am^4 as the cutoff.

EM Z Component Channel Times (µs)

1 120

2 141

3 167

4 198

5 234

6 281

7 339

8 406

9 484

10 573

11 682

12 818

13 974

14 1151

15 1370

16 1641

17 1953

18 2307

19 2745

20 3286

21 3911

22 4620

23 5495

24 6578

25 7828

Scale 1 : 20000

0m

400m

800m

1200m

WGS84 UTM8N

Tarsis Capital Corp

Caribou Project

Yukon

VTEM 30 Hz Survey

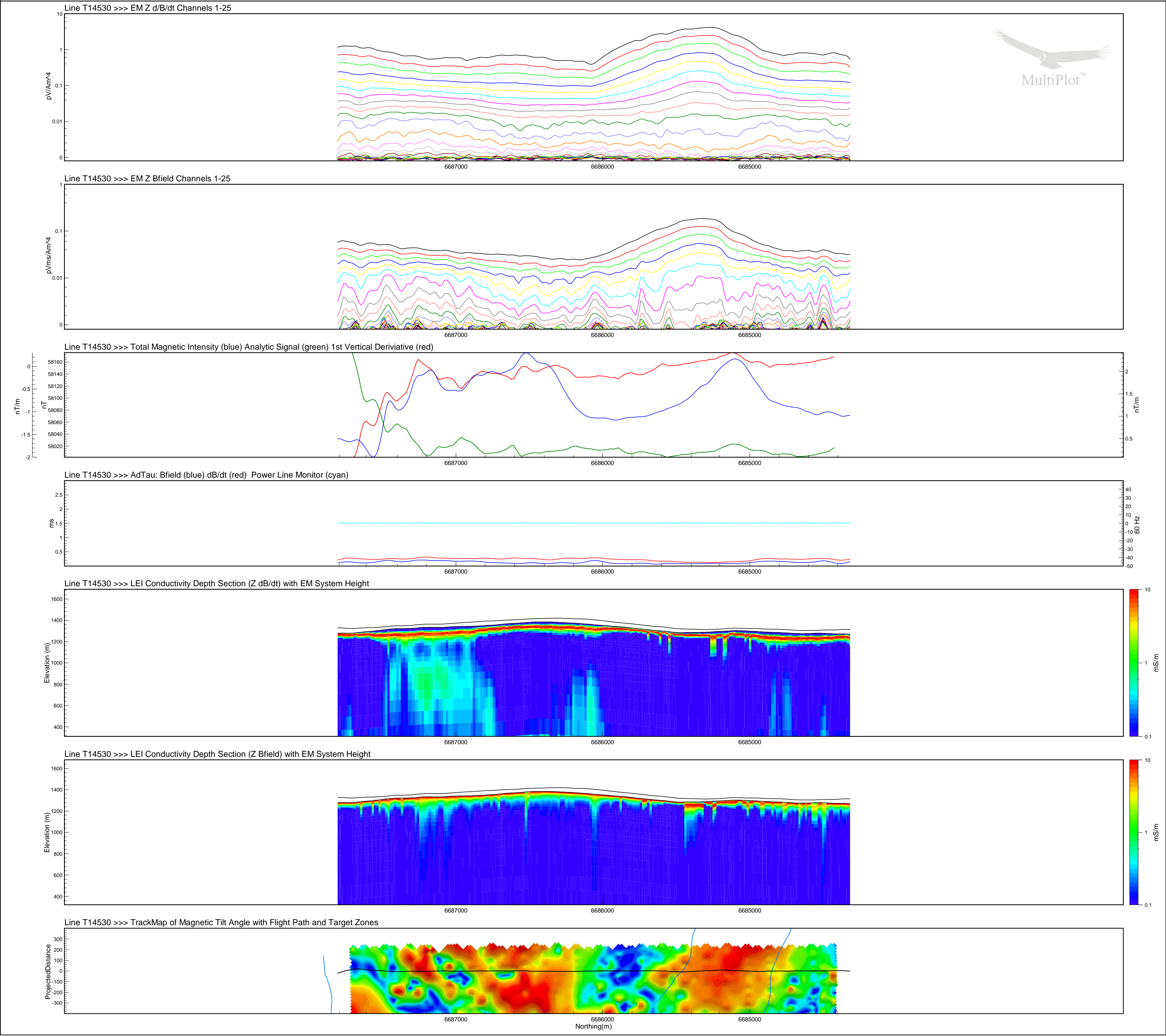
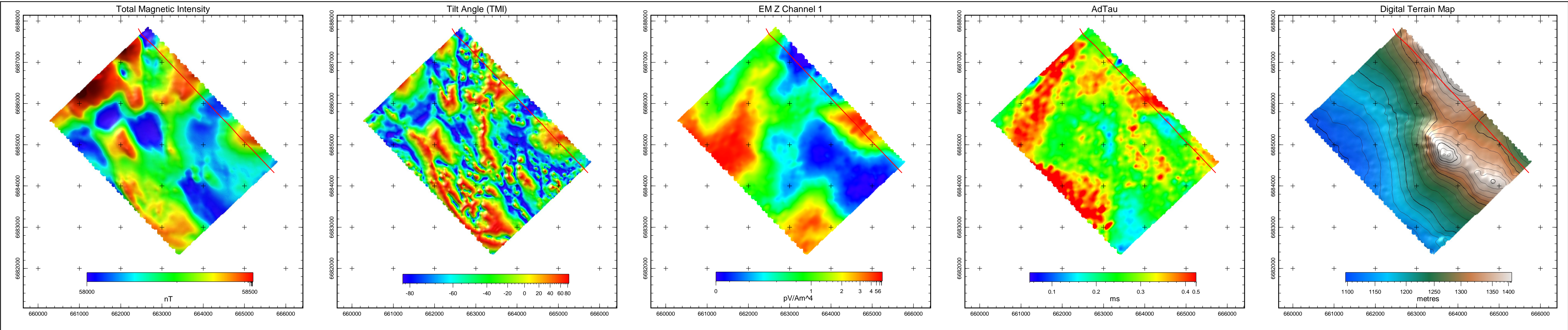
Flown: July 2008

Processed: January 2009

Condor Consulting Inc.

Lakewood, Colorado





## Line T14530

### Legend

- Single Peak Conductor
- Double Peak Conductor
- Wide Zone Strong
- Wide Zone Medium
- Wide Zone Weak

NOTE:  
AdTau outcomes used in this MultiPlot were calculated from the Z dB/dt data using 0.002 pV/Am^4 as the cutoff.

### EM Z Component Channel Times (µs)

- |    |      |
|----|------|
| 1  | 120  |
| 2  | 141  |
| 3  | 167  |
| 4  | 198  |
| 5  | 234  |
| 6  | 281  |
| 7  | 339  |
| 8  | 406  |
| 9  | 484  |
| 10 | 573  |
| 11 | 682  |
| 12 | 818  |
| 13 | 974  |
| 14 | 1151 |
| 15 | 1370 |
| 16 | 1641 |
| 17 | 1953 |
| 18 | 2307 |
| 19 | 2745 |
| 20 | 3286 |
| 21 | 3911 |
| 22 | 4620 |
| 23 | 5495 |
| 24 | 6578 |
| 25 | 7828 |

Scale 1 : 20000



Tarsis Capital Corp  
Caribou Project  
Yukon  
VTEM 30 Hz Survey

Flown: July 2008  
Processed: January 2009



Condor Consulting Inc.  
Lakewood, Colorado